

OEM Compatible Transceivers

GBIC, SFP, Xenpak, X2, XFP, SFP+, QSFP+ & CFP

Top-Quality Transceivers with Lifetime Warranties

ProLabs offers an extensive range of optical and copper transceivers to fit your requirements. All transceivers are standards-based and comply with the MSA (Multi-Source Agreement). Transceivers range from 100BASE-FX to 100Gb and cover optical and copper transceivers such as GBIC, SFP, Xenpak, X2, XFP, SFP+, QSFP+ and CFP.

ProLabs transceivers are manufactured utilising the highest quality components available. Our commitment to quality means we produce a consistent, standardised product, purpose-built for compatibility with today's top Original Equipment Manufacturer (OEM) specifications.



ProLabs optical transceivers are compatible with all the following manufacturers

3COM	Huawei
Alcatel	Intel
Allied	Juniper
Arista	Linksys
Asante	Marconi
Avaya	Milan
Blackbox	Netgear
Brocade	Nortel
Cisco	Packetfront
Dell	Planet
Dlink	Riverstone
Edge-Core	SMC
Emulex	Telco
Enterasys	Treadnet
Extreme	Vixel
Force10	Zyxel
Foundry	
Helwett Packard	

Selecting Your Transceiver

There are many forms of MSA standard pluggable optical transceivers, each with different distance range specifications, designed for different applications, data rates and connectors. The popular form factors are detailed below.

GBIC - First generation transceivers with SC fibre connectors, commonly used with Gb Ethernet and fibre channel, also available for CWDM with wavelength/channel options.

SFP - Small form factor pluggable transceivers, resulting in increased density, capable of data rates up to 6Gb/s, available in 850nm, 1310nm, and 1550nm, bi-directional option (1310nm/1490 or 1310nm/1550nm), and DWDM and CWDM wavelengths/channel options. Distances range up to 160km.

Xenpak - Larger form transceivers with capability of data rates up to 10Gb/s, with a range of a few metres up to 80km. DWDM and CWDM wavelengths/channel options.

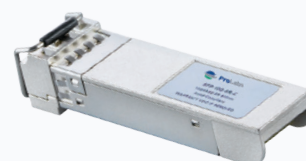
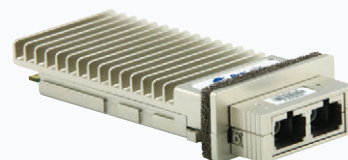
X2 - Transceivers with the capability of data rates up to 10Gb/s, with a range of a few metres up to 80km. DWDM and CWDM wavelengths/ channel options.

XFP - Transceivers with the capability of data rates up to 10Gb/s with a range of a few metres to 80km. DWDM and CWDM wavelengths/channel options, including tuneable DWDM options.

SFP+ - Transceivers with capability of data rates from 8Gb/s to 10Gb/s, with range of a few metres up to 80km. DWDM and CWDM wavelengths/ channel options. Full range of DAC/Twinax cables available.

QSFP+ - Quad small form factor pluggable transceivers, capable of data rates up to 40Gb/s. Range of passive DAC cables and AOC cables available.

CFP - Transceivers with capability of data rates up to 100Gb/s, with range of up to 10km. Suitable for use in datacentres, metropolitan area networks, DWDM systems, IP switches and storage area networks.



Additional Information

ProLabs provides four common distance ranges within each transceiver model:

- ▶ SX/SR Short haul with a range up to 2km.
- ▶ LX/LR Long haul with a range up to 10km. We are also able to provide long haul with enhanced lasers capable of 40km.
- ▶ EX/ER Extended reach with range up to 40km with GBIC/SFP as well as with 10Gb/s transceivers.
- ▶ ZX/ZR/EZX Extended reach with range up to 120km with GBIC/SFP and 80km with 10Gb/s transceivers.

In addition to the basic form factors, ranges and data rates of pluggable optical transceivers, there are certain applications to be identified in order to select the most appropriate optical transceiver, such as: Ethernet, SONET, DWDM, CWDM, fibre channel, data rate, wavelength, fixed or variable rate and bi-directional or unidirectional.

Many transceivers are available in E-Temp (-5°C to +85°C) or I-Temp (-40°C to +85°C) ranges as well as C-Temp (0°C to +70°C).

Custom Solutions

ProLabs can provide technologies that are often not offered by the OEM platform. Custom solutions include:

- ▶ 2km SFP/GBIC over Multimode
- ▶ 40km SFP over 1310nm Singlemode
- ▶ Bi-directional SFP, 1490nm/1310nm, 60km
- ▶ Bi-directional SFP, 1490nm/1310nm, 80km

ProLabs can give you more tools in your network design toolbox, talk to us about other requirements not detailed here that you may have.

+44 (0) 1285 719 600 • info@prolabs.com • www.prolabs.com

 @prolabs_uk •  [prolabs.com](https://www.linkedin.com/company/prolabs)

Challenging OEM Dominance

The rapid growth of open source is radically changing market dynamics. With open source, businesses are free to choose any software or product and are no longer “locked in” to OEM products. ProLabs transceivers are the high-quality, dependable, cost-effective alternative.

Myth: Only optical transceivers provided by the OEM will work with existing equipment

Fact: All ProLabs products are designed to comply with industry standard MSA (Multi-Source Agreements). Certain vendors require an element of serialization to make the product compatible; when ordering a compatible part to the desired OEM equipment, ProLabs can offer a truly “plug and play” solution, ensuring complete compatibility. ProLabs’ industry-leading lifetime warranty will not invalidate any vendor warranty on the host device.

Visit www.prolabs.com for the full range of products and downloadable data sheets.



Top-Quality Products with Lifetime Warranties



Transceivers

GBIC, SFP, XFP, X2, Xenpak, SFP+, QSFP+ and CFP.
CWDM and DWDM Modules.



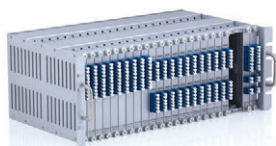
DAC & AOC Cables

10G, 40G and 100G data rates.
SFP+, QSFP+, QSFP+ Breakout
and Hybrid.



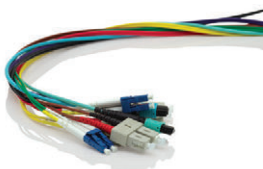
Media Converters

10Gb & 10/100/1000,
copper to fibre conversion.



Mux/Demux

4 or 8 channel CWDM
and DWDM.



Fibre Cable

Fibre cable in a range of types,
lengths and connectors.

Everything You Need, When You Need It.

ProLabs offers an extensive range of high-quality products including optical and copper transceivers, cabling and media converters. With an unrelenting commitment to quality, service and support, ProLabs is the only mid-tier provider offering customisation, lifetime product warranties and fast, flexible shipping options.

Visit www.prolabs.com for the full range of products and downloadable data sheets.



- Unit A, The Mallards
Broadway Lane
South Cerney
Cirencester
GL7 5TQ

+44 (0) 1285 719 600 • info@prolabs.com

@prolabs_uk • prolabs.com