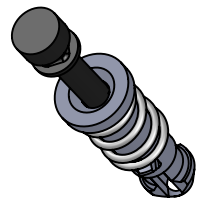
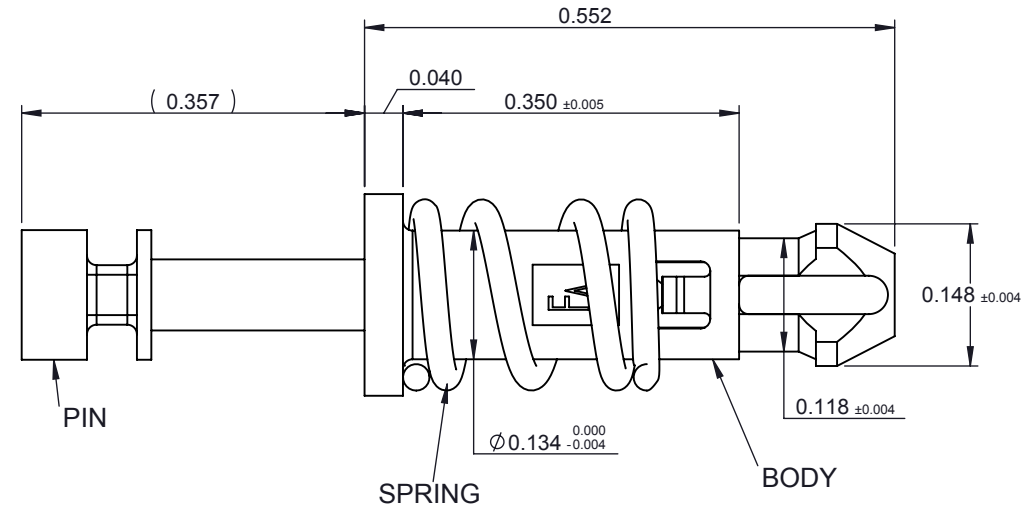
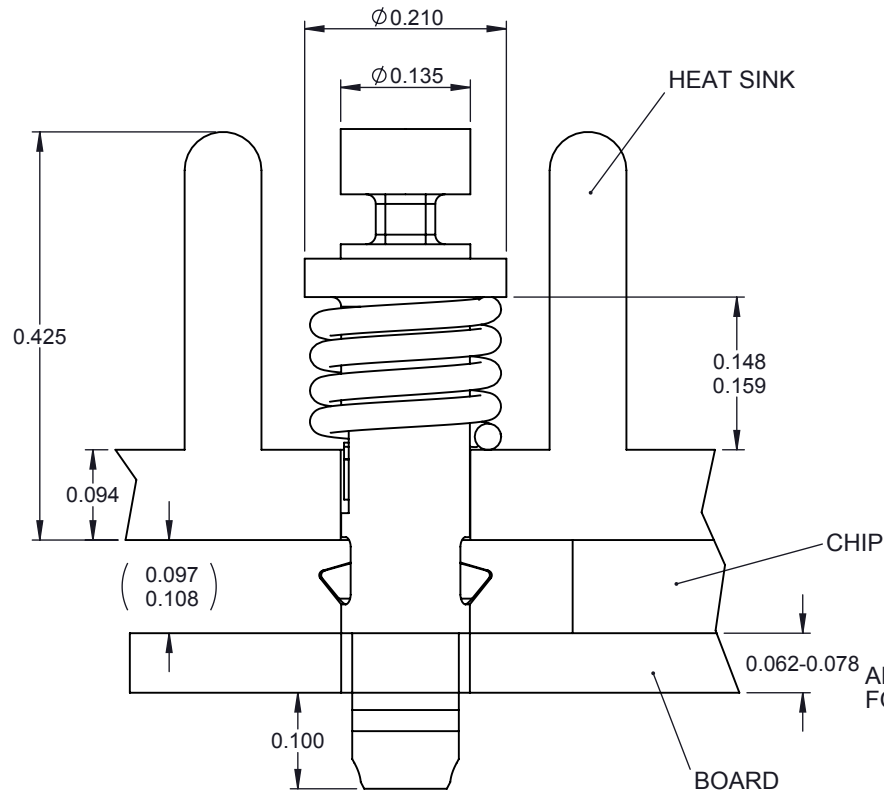


REV	DESCRIPTION	DATE	APPROVED
1	INITIAL RELEASE	Jun-25-2014	Chris Hsu

- NOTES:
1. P.C. BOARD HOLE DIAMETER RANGE: .116(2.94) TO .135(3.43)
 2. PIN AND BODY SHOWN IN ASSEMBLED CONDITION.
 3. HEAT SINK HOLE DIAMETER: .135" +.003/-.000
 4. SPRING DETAILS:
 - MATERIAL: SUS 304 STAINLESS STEEL
 - SPRING RATE: 31.4 LBF/IN
 - FREE LENGTH: .268"
 - TOTAL COILS: 4
 - WIRE DIAMETER: .024"
 - SPRING I.D.: 0.142"
 5. HEAT SINK DIMENSIONS ARE FOR REFERENCE PURPOSE AND MAY VARY DEPENDING UPON APPLICATION.
 6. PIN AND BODY: NYLON 6/6, FLAME CLASS:UL94V2, COLOR: BLACK.
 7. MATERIAL MUST COMPLY WITH THE RoHS DIRECTIVE OF THE EU.



" " MARK DIMENSION NEED TO BE MEASURED FOR FQC INSPECTION .
 " " MARK FOR CPK WHEN SUBMIT FAI.
 " () " MARK FOR REFERENCE DIMENSION.

THE DRAWING CONTAIN ITW CORPORATION CONFIDENTIAL INFORMATION, AND IS THE INTELLECTUAL PROPERTY OF ITW CORPORATION. IT IS DISCLOSED IN CONFIDENCE AND ITS CONTENTS MAY NOT BE DISCLOSED, REPRODUCED, DISPLAYED OR MODIFIED, WITHOUT THE PRIOR WRITTEN CONSENT OF ITW CORPORATION
 此圖含ITW公司之機密文件, ITW公司擁有智慧財產權, 若無正式核准, 不得揭露, 複製, 展示或修改之

DRAWN BY	Chris Hsu	DATE	Jun-25-2014
CHK BY	Gordon Yeh	DATE	Jun-25-2014
APP BY	Perry Lo	DATE	Jun-25-2014

	1	39FT81-02-2099	PIN
	1	39FT74-03-2099	BODY
	1	52FT20-00-4010	SPRING
-003 -002 -001		ITEM NO.	DESCRIPTION
PART LIST			

MATERIAL:	UNLESS OTHERWISE SPECIFIED INTERPRET DIMENSIONS AND TOLERANCES IN ACCORDANCE WITH ASME Y14.5M-1994 DIMENSIONS ARE IN MM TOLERANCES:	安天德百電股份有限公司 Electronic Business Asia Co.,Ltd.	
FINISH:	Dimension: ±0.010 Angles: ±2°		PART NAME:
This print and any design thereon is the property of ITW-ASIA, Division Illinois Tool Works Inc. This print is to be returned upon request or completion of the work for which it was issued. It is to be used only for the purpose for which it was expressly loaned and is not to be copied in any manner, nor is information taken therefrom to be transmitted, or passed on to others without written permission of Illinois Tool Works Inc.		PART NUMBER:	REV
		83FT02-20-9909	1
			SHEET
			1/1